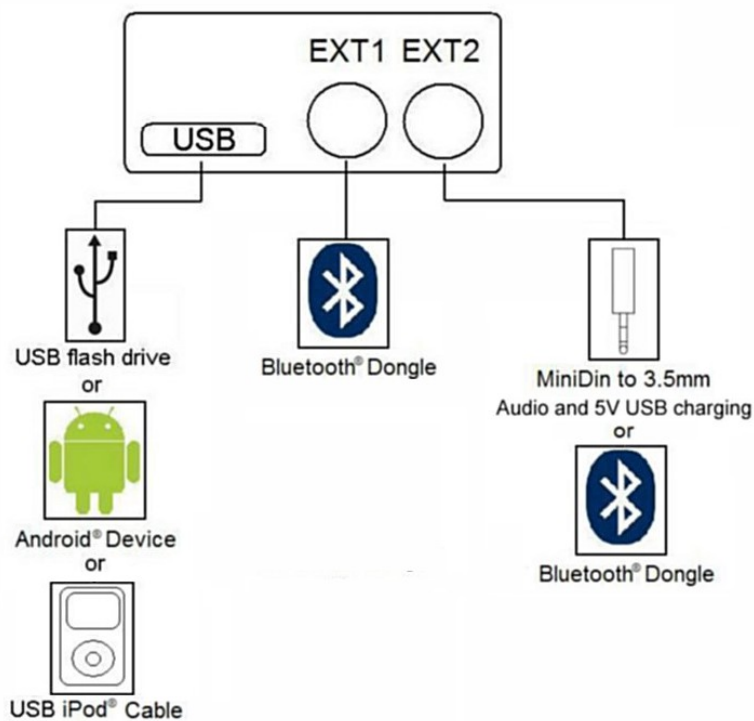


# OPERATION MANUAL

## GROM-MST4 BMW

### 1. EXT1-EXT2 PORTS - Accessories Cables Connection



Connect the cables to the appropriate slots available on GROM-MST4 (see above illustration).

EXT1- connect GROM Bluetooth Dongle

EXT2- connect GROM Bluetooth Dongle or AUX-In 3.5mm cable

Note: You can connect GROM Bluetooth Dongle to either the EXT1 or EXT2, and AUX cable only to the EXT2.

## **2. Quick operation steps**

### **2.1 MODE Selection**

1. Press CD/AUX to enter into GROM mode.
2. Navigate to Disc 6 in GROM mode.
3. Select Track 2 to Change between USB and AUX.

### **2.2 Quick button operation for BMW I-Drive**

1. Press < or > button to change tracks
2. You can create up to 5 Folders/Playlists with unlimited number of sub-folders and tracks on your USB memory device, Android device, iPod or iPhone. Each playlist will be assigned to the particular Disc button on the stereo.
3. Track title, time and number, Disc number will be shown on the stereo
4. To change Folders/Playlists use Disc buttons on the stereo.

## **3. USB MODE - Android Operation**

### **3.1 Android Device Setup and Operation**

The GROM-MST4 adapter when in USB mode allows you to connect your Android device directly to the GROM-MST4 USB port. You will need the GROM DashLinQ app available on the Google Play store / Android marketplace (search for DashLinQ) . Once you have DashLinQ installed on your Android device, you can connect your Android to the USB port using your own or provided USB Android connector cable.

Depending on the version of your Android software and the phone model, you might need to disable or enable the USB Debugging option on your phone. If you plugged in your Android phone to the GROM device, and your adapter is not working, please go to the phone settings and either enable or disable the USB Debugging function.

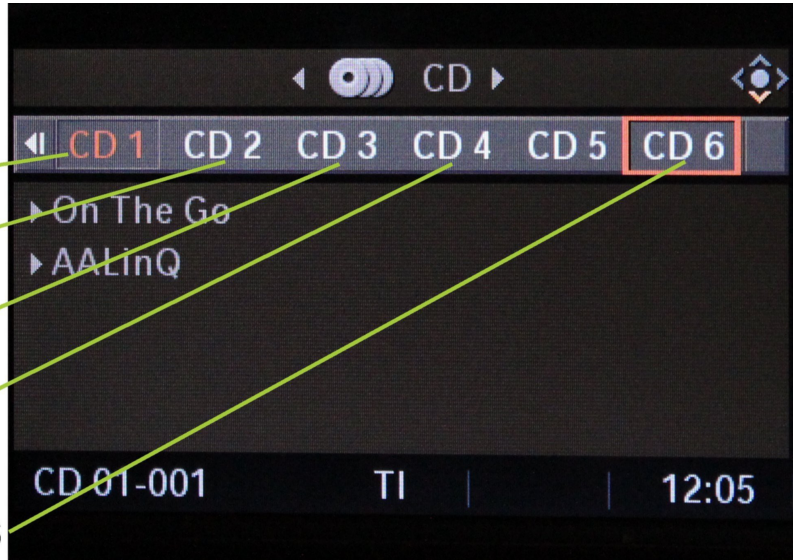
1. To enable/disable USB Debugging, on Android device go to Settings ◊ Applications ◊ Development
2. Once you connect your Android device to GROM-MST4 and the GROM unit is in USB playback mode, DashLinQ should automatically start playing a song from your Android device.

### **3.2 DashLinQ operation with the GROM-MST4-BMWO for the music stored on Android phone (Local music plugin within DashLinQ)**

DISC 1 will be Playlist; DISC 2 will be Artist; DISC 3 will be Albums; DISC 4 is Genre; DISC 5 N/A; Disc 6 GROM Menu



**Playlist / CD1**  
**Artist / CD2**  
**Album / CD3**  
**Genre / CD4**  
**GROM Menu / CD6**



**Troubleshooting:**

Symptom	Cause	Remedy
No music is coming from the car speakers or sound is distorted	GROM-MST4 is in the wrong mode	Make sure that you are in the USB playback mode
You can't hear the music in DashLinQ	An empty album or playlist is selected on the DashLinQ	Make sure that you select a playlist that has songs and it is not empty.
Music is not playing	You need to change USB Debugging selection in your phone settings.	To enable/disable USB Debugging, on Android device go to Settings → Applications → Development
Music is distorted or not playing at all	Your phone has special symbols in its name, such as ? / ' " #	Make sure you remove special symbols from the phone's name by going to Settings > General > About > Name

**4. USB MODE – USB stick / flash drive / external hard drive operation**

**4.1 Supported USB Storage Devices**

All FAT16/32 formatted storages:

- USB sticks/hard drives

The GROM USB supports only FAT / FAT16 / FAT32 formatted storages. NTFS or exFAT are not supported!

**4.2 Supported formats**

The GROM-USB supports the following formats:

- FLAC lossless
- MP3 with bitrates up to 320Kbps
- WMA with bitrates up to 389Kbps
- AAC / iTunes with bitrates up to 389Kbps
- OGG/Vorbis with bitrates up to 389Kbps
- VBR/CBR

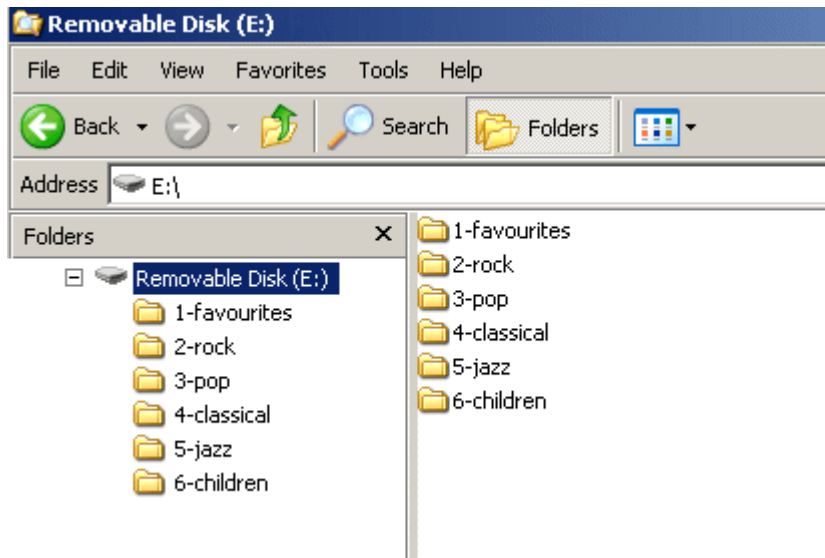
**Note 1:** No digital rights management (DRM)-protected content will play directly through the GROM-MST4 adapter as such content is encrypted and signed by the media publisher. You need to burn such files to a CD and then rip them back with any



capable software.

**Note 2:** AAC files stored on USB Flash Drives may have a delay of 5-10 seconds before the music starts playing.

### 4.3 USB Directories/Folders Setup



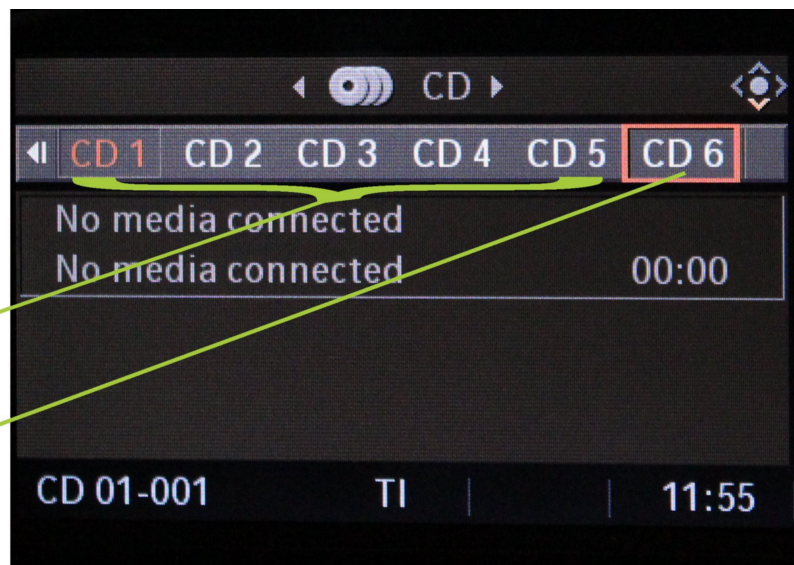
- You must set up the PLAYLISTS (FOLDERS/DIRECTORIES) on your USB device. You will need to set up at least one playlist. Without playlists the USB interface will not play the music.

- Create 5 folders (or directories) for each disc your stereo supports.

- Name them with numbers (i.e., 1-Pop, 2-Rock, 3-Classic, etc); save all of your music into these directories. If you do not name the folders with the numbers, they will be assigned to the specific Disc according to the time of creation.

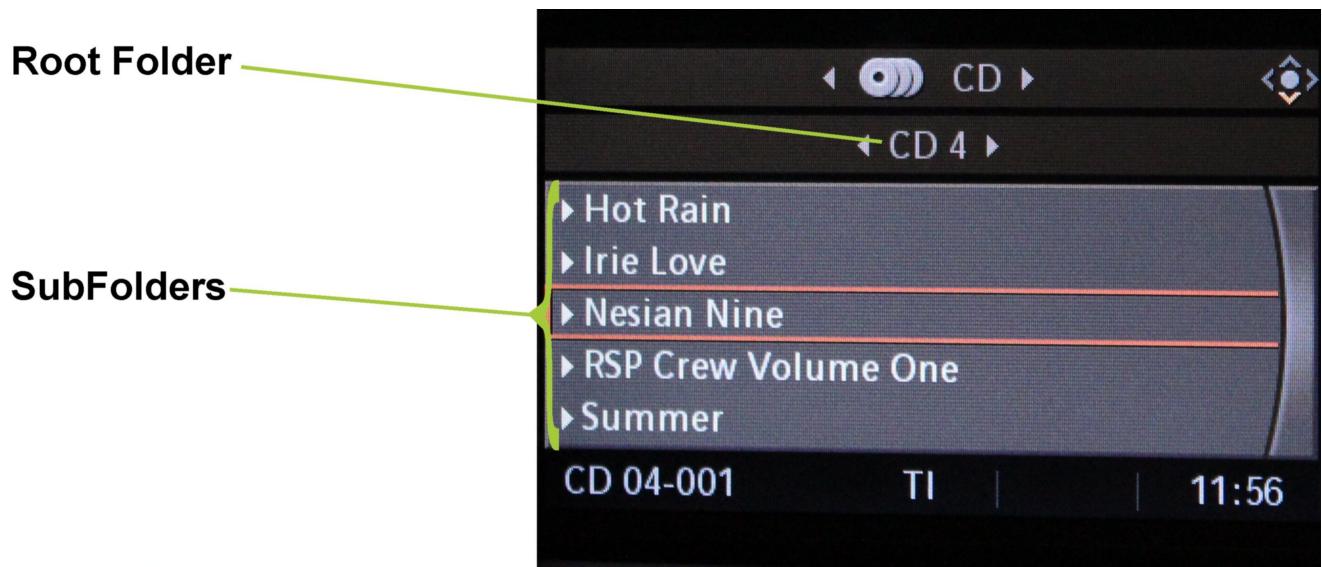
**PlayList and Folder  
Selection 1 thru 5**

**GROM Menu**



- As soon as you connect the GROM-MST4 adapter to a USB portable data medium, GROM will translate root directories into virtual discs.

- The car stereo will also recognize subdirectories. You can browse the subcategories using control knob similarly to browsing the USB subdirectories on your computer. See the illustration below:



Check USB Drive Setup guide at [http://gromaudio.com/docs/Grom\\_USB\\_Setup.pdf](http://gromaudio.com/docs/Grom_USB_Setup.pdf)

#### **4.4 USB Basic Features**

The GROM-MST4 adapter has the following functionality:

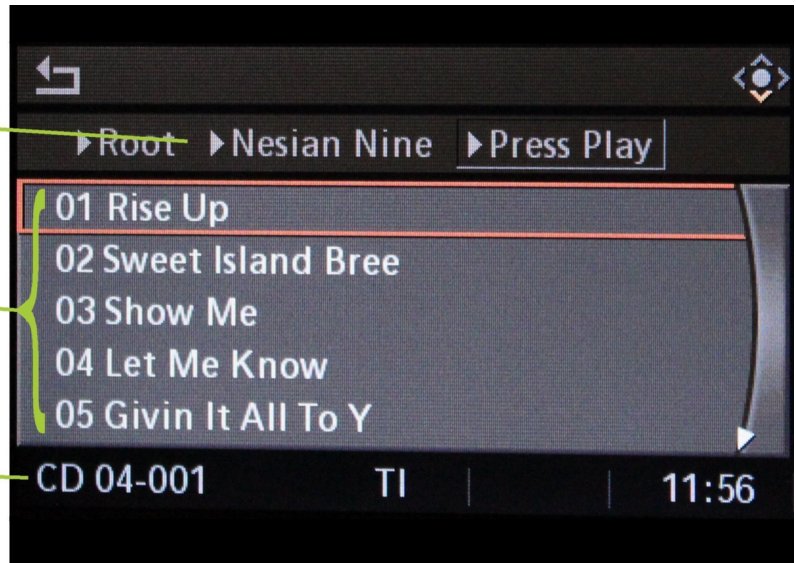
- Every directory in a root of the USB portable data medium becomes a virtual disc. Please note: directories with non-audio files (e.g., pictures, documents) located in the root will be recognized as empty virtual discs.
- All audio files within the root directory are enumerated and treated as TRACKS.
- The following operations are supported by the GROM-MST4:
  - o Change virtual disc/playlist
  - o Change tracks forward and backward
  - o Display track # and track title where available
  - o Restore last positions for up to 4 USB sticks
  - o Restore last playlist positions in up to 20 virtual discs



**SubFolders**

**Tracks List**

**Root Folder**



### 5. iPod/iPhone operation through USB port with USB to iPod cable

Once in the USB mode of GROM with iPod/iPhone plugged into to USB port of GROM the following operation are available:

DISC 1 is SIMPLE Mode

DISC 2 will be Playlist

DISC 3 will be Artist

DISC 4 will be Albums

DISC 5 is Genre

Disc 6 GROM Menu

**Simple Mode**

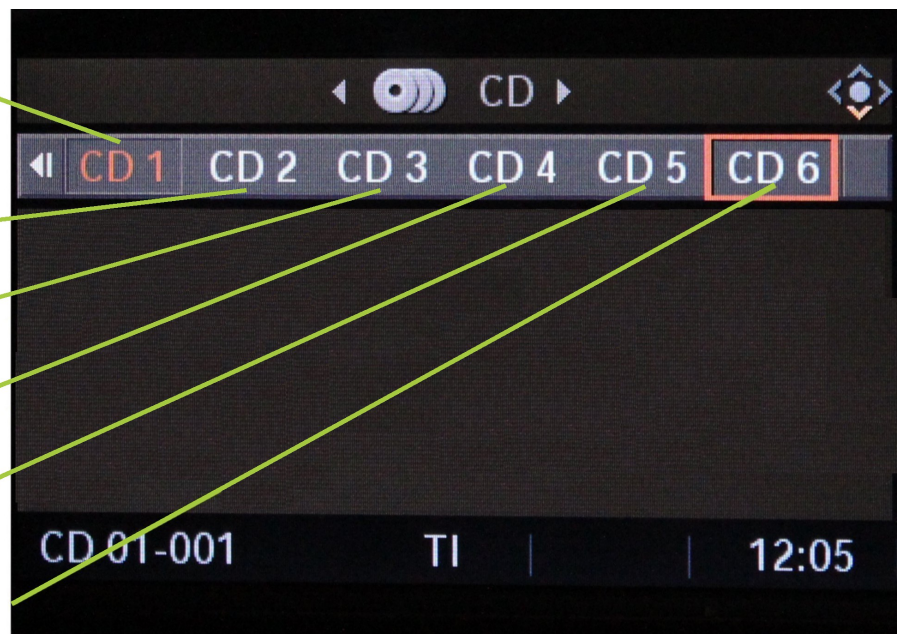
**Playlist / CD1**

**Artist / CD2**

**Album / CD3**

**Genre / CD4**

**GROM Menu / CD6**



### C. WHEN THE CAR IGNITION IS OFF

When you turn your car stereo or car ignition off, the iPod will automatically will go into sleep mode. In the sleep mode, the iPod will still consume power—although very little—from the car battery. There is no need to disconnect the iPod every time you turn off your car.

However, it is strongly advised that you disconnect the iPod if you do not plan to operate your car for one week or more.

## 6. USB and iPod iPhone MODE Operation Troubleshooting

Symptom	Cause	Remedy
No music is coming from the speaker	GROM-MST4 is in the wrong mode	Make sure that the correct mode (USB or AUX) is selected. Please refer to the chapters 2-3 of this manual.
The music is distorted.	GROM-MST4 is in the wrong mode	Make sure that the correct mode (USB or AUX) is selected. Please refer to the chapters 2-3 of this manual.
You can hear the music from the iPod but you can't control it from the stereo	iPod needs to be reset	Reset the iPod (resetting will not erase your music, it will only restart the iPod)
You can't hear the music from USB or iPod	An empty album or playlist is selected on the USB or iPod	Make sure that the non-empty album or playlist is selected on the USB or iPod
The player is skipping the playlists on USB	You have empty playlists	Make sure there is no empty playlists on the USB drive
There is no music, or the music is distorted, while iPhone is connected via USB or Bluetooth	Your phone has special symbols in its name, such as ? / ' " #	Make sure you remove special symbols from the phone's name by going to Settings > General > About > Name

## 7. Bluetooth and AUX-IN

**Note: Bluetooth Dongle and AUX cable are sold separately.**

In the AUX mode you can connect any audio source via GROM MiniDin to 3.5mm phone jack cable.

### 7.1 AUX-IN input

You can connect any audio source via GROM MiniDin to 3.5mm phone jack cable (please refer to the section 1.8 of Install Manual, "optional accessories"). The GROM 3.5mm cable connects to the EXT2 port on the GROM-MST4 adapter and provides AUX-IN for any audio device. The charging USB connector on the GROM auxiliary cable (if available) provides 5V USB charging for most mobile devices.

To start using GROM as the auxiliary adapter, simply connect your audio source to the 3.5mm phone jack and then turn the audio source ON.

**You are using EXT2 for GROM AUX cable.** Your stereo should be in the **AUX** GROM mode. Please refer to the Chapter 2.1 of this manual on the MODE changes.

If the stereo is ON and in the CORRECT MODE – the device will be ready to play. You can control the connected device using its own controls. Please regulate and adjust the volume on the connected device for proper audio levels.

You can connect MP3/DVD player, Satellite and many other audio devices that have 3.5 mm plug. If your device has a different type of connector (RCA, 2.5mm, etc.) you can buy an extension adapter at your local stereo store or on GROM website.

**Note:** When the ignition is OFF the adapter will not automatically shut down the AUX-IN device. Please make sure to turn off the AUX-IN audio source manually. If you plan not to operate your car for one week and more, please disconnect AUX-IN audio source from the adapter. When you are using GROM-USB in a different mode other than AUX, please turn off AUX-IN audio source.

### 7.2 BLUETOOTH Dongle

You can also connect GROM Bluetooth Dongle (GROM-BTD) to either the EXT1 or EXT2 port on the GROM-MST4 adapter for the hands free use of your mobile phone and wireless music play. Please refer to the GROM Bluetooth Dongle manual that is supplied with your Bluetooth Dongle. You can also access the manual online at GROM Audio website:

[http://gromaudio.com/docs/bluetooth\\_manual.pdf](http://gromaudio.com/docs/bluetooth_manual.pdf).

**If for some reason you need to reset the Bluetooth:**

- Go to the Disc 6 (GROM Menu)
- Navigate to BT Reset
- Press to reset Bluetooth

### 7.3 Disc 6 – GROM menu

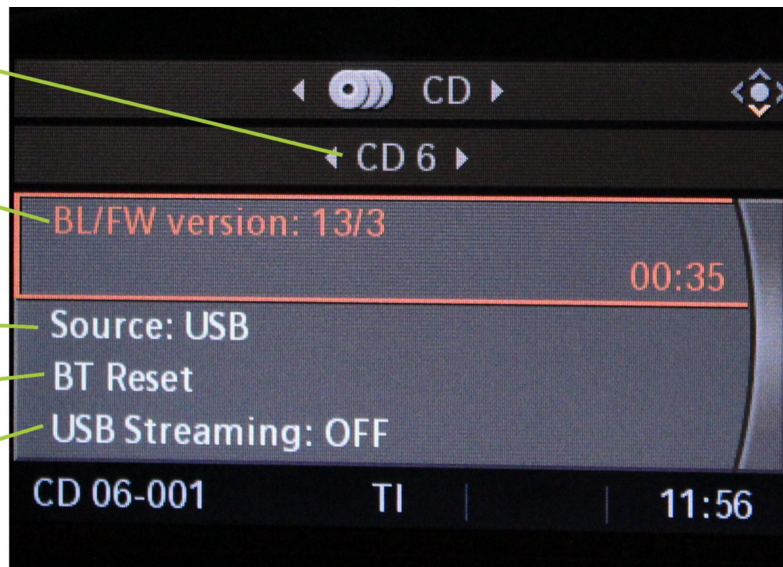
#### GROM MENU (DISC 6)

#### BootLoader / Firmware Version

#### Change GROM Modes (USB, iPod, AUX)

#### Bluetooth Reset

#### Enable/Disable USB STREAM



## 8. Support and Warranty

For technical support, please visit <http://gromaudio.com/support.html> and fill in the web form. First available representative will answer to your question.

For warranty information please refer to your Installation Manual.